

LIGHT RECP.
"WHITE 2-PIN" AMP

SYSTEM MIS-WIRE

RED INDICATOR LIGHT

HIGH-LIMIT TRIPPED

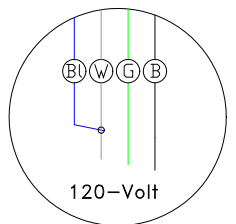
RED INDICATOR LIGHT

PUMP 1 FUSE

RED INDICATOR LIGHT

PUMP 2 FUSE

RED INDICATOR LIGHT



Line 2 & Neutral must be connected for 120V input.

LINE 1 — B

LINE 2 — Bl

NEUTRAL — W

GROUND — G

Hydro-Quip

Dwg. No. 506G0-DKS5

Drawn BH Rev 2

Wire Color Code

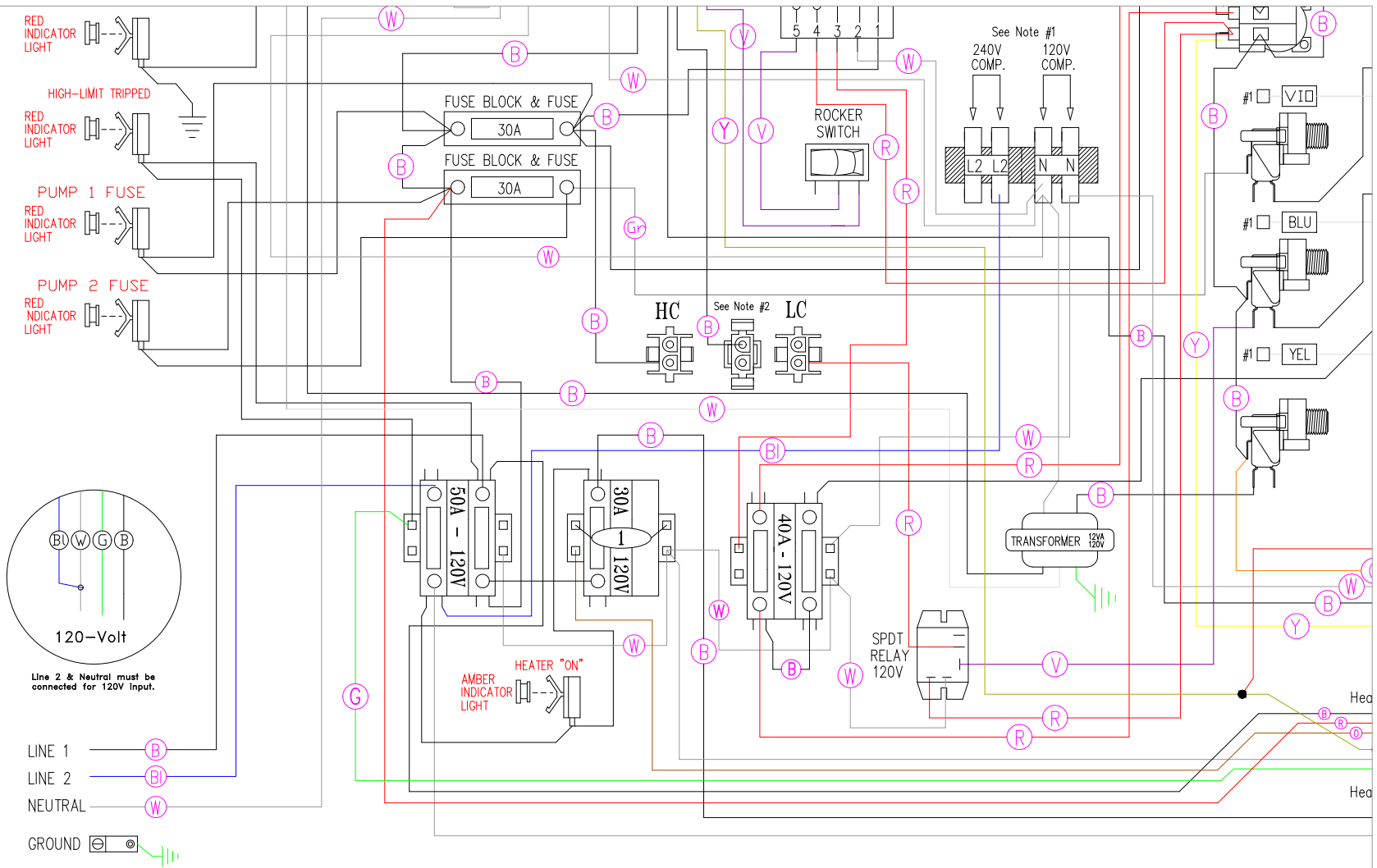
Manufacture Notes: #1 - Universal System, connecting the White/Component receptacle wire to the corresponding position on the Universal Terminal Block determines component voltage.

Date 05.19.05

B - Black G - Green
Br - Brown Bl - Blue
R - Red V - Violet
O - Orange W - White
Y - Yellow Gr - Gray

#2 - Low Current (heater off w/high-speed pump or blower) or High Current (no heater restriction)

Diagram No. 7027



Hydro-Quip

Dwg. No. 506G0-DKS5 Drawn BH

Manufacture Notes: #1 - Universal System, connecting the White/Component receptacle wire to the corresponding position on the Universal Terminal Block determines component voltage.
 #2 - Low Current (heater off w/high-speed pump or blower) or High Current (no heater restriction)

Date 05.19.0
 Diagram No. 7027